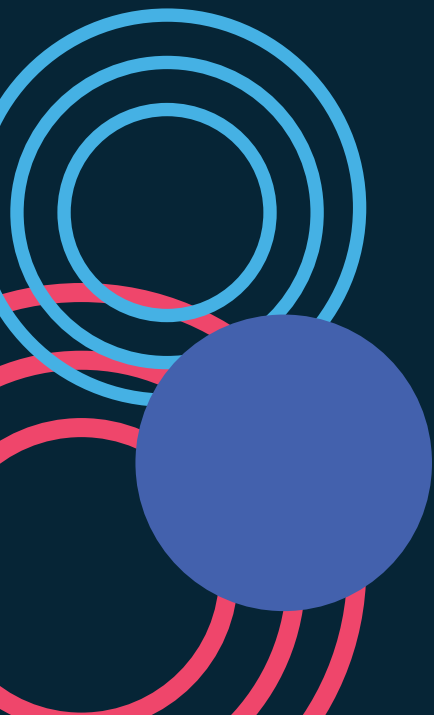


ILLINOIS CREDIT UNION SYSTEM
**ANNUAL
REPORT**

20

25



2025 was a year that tested our system – and affirmed our strength.

Amid heightened regulatory activity and growing demands on credit unions, the Illinois Credit Union System delivered meaningful results. We expanded leadership development, strengthened compliance and field support, and deepened engagement across our programs — reinforcing our role as a trusted partner to our members.

What makes me most proud is how this work was done: through collaboration, professionalism, and a shared commitment to service. Every initiative, every conversation, and every investment reflects our belief in the cooperative difference and the people who bring it to life.

As we look ahead, we remain focused on supporting strong leadership, building sustainable growth, and ensuring Illinois credit unions continue to thrive. I am grateful for your trust and partnership, and I look forward to what we will accomplish together.



Libby Calderone
President/CEO



Effective advocacy requires showing up – consistently, strategically, and prepared.

In Springfield, we protected a strong operating environment and advanced practical legislative solutions. We led a coordinated response to the Illinois Interchange Fee Prohibition Act through engagement, coalition-building, and litigation, ensuring policymakers understood its real-world impact. We were successful in getting an extension to the effective date of IFPA, and we continue to push for a repeal.

In Washington, we defended the credit union tax status and pushed for modernization and regulatory balance.

This work succeeds because credit unions stay engaged and share their stories. Your involvement strengthens our voice and sharpens our impact.

Together, we are not just responding to challenges — we are shaping policy that allows credit unions to serve members effectively today and into the future.



Patrick Smith
EVP, Chief Advocacy Officer



OUR COMPANY MISSION

To deliver quality information, products, and services that provide a favorable operating environment to help credit unions prosper and compete in an ever changing financial marketplace.

BOARD OF DIRECTORS



CHAIR

Joseph Kregul
ICUL & Envisant
HealthCare Associates CU



VICE CHAIR

Michael Abraham
ICUL & Envisant
Great Lakes CU



TREASURER

Jose Garcia
ICUL & Envisant
Northwest Community CU



SECRETARY

Pete Fauth
ICUL & Envisant
Financial Plus CU



DIRECTOR

Suzie Bell
ICUL
Elite Community CU



DIRECTOR

Frank Padak
ICUL
Scott CU



DIRECTOR

Matthew Parrott
ICUL
SIUE Credit Union



DIRECTOR

Doug Patterson
Envisant
Streator Onized CU



DIRECTOR

Deborah Fears
Envisant
Chicago Post Office ECU



DIRECTOR

Mary Ann Pusateri
Envisant
Partnership Financial CU



DIRECTOR

Steve Gorrie
Envisant
State Farm FCU



DIRECTOR

Danita Swanson
ICUL & Envisant
2 Rivers Area CU



DIRECTOR

Darlyne Keller
ICUL
Rock Valley CU



DIRECTOR

Joseph Trosclair
ICUL
ALEC



DIRECTOR

Alan Meyer
ICUL
1st MidAmerica CU



DIRECTOR

Ann Wildman
ICUL
United Equity CU

ADVOCACY IN ACTION

The ICUL Government Affairs Team works diligently to deliver a favorable operating environment for credit unions in Illinois



Federal Advocacy

ICUL engaged the Illinois Congressional delegation to preserve the credit union tax exemption, support Credit Union Act modernization, and oppose interchange expansion. Illinois credit unions delivered 13,000+ emails and 7,000+ postcards to Congress as part of Don't Tax My Credit Union, and the effort helped ensure credit unions retained our tax exempt status. ICUL also worked to keep the Credit Card Competition Act from inclusion on must-pass legislation, and we continue to advocate for S.522 (board meeting modernization).



Keith Sias
SVP, Federal Advocacy



State Advocacy

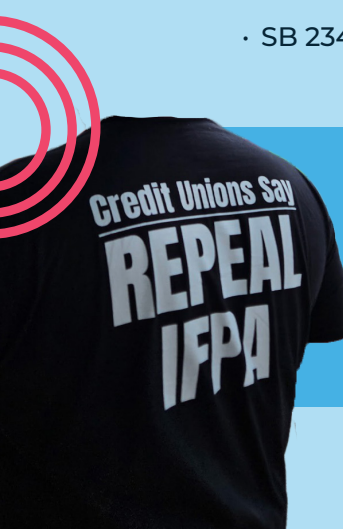
The Spring 2025 legislative session addressed a broad range of issues affecting credit unions. ICUL successfully advanced key priorities, including Illinois Credit Union Act amendments and a one-year extension of the IFPA implementation date. We also amended or defeated proposals that would have negatively affected operations or competitiveness.

Notable 2025 Legislation

- ✓ Illinois Credit Union Act Amendments — SB 1994 / P.A. 104 0403 (effective Jan. 2026)
- ✓ Interchange Fee Prohibition Act — HB 742 / P.A. 104 0004
- ✓ Code of Civil Procedure Updates — SB 1738 / P.A. 104 0120; SB 1777 / P.A. 104 0123

Other Bills of Interest

- SB 2318 amended to target non-depository entities' use of "bank/banking," preserving credit unions' usage (P.A. 104 0144)
- SB 1512 (expanding IDFPR consumer protection rulemaking) — did not advance
- SB 2346 (prohibiting CU acquisition of bank assets) — did not advance



Interchange Fee Prohibition Act (IFPA)

ICUL led a coordinated response to the IFPA through legislative engagement, coalition building, and litigation. A preliminary injunction granted in December 2024 applied to certain federally regulated banks; coplaintiffs argued in October 2025 to extend injunctive relief to other institutions.



Ashley Sharp
Chief Legal Officer &
SVP, State Advocacy

CUPAC & POLITICAL ADVOCACY

In 2025, political advocacy remained a cornerstone of ICUL's efforts to protect and advance the credit union movement. Through strategic fundraising, broad-based engagement, and strong participation across member credit unions, ICUL strengthened its collective voice at both the state and federal levels.

CUPAC

CUPAC achieved another exceptional year, raising \$543,160 from 17 chapters, 90 state-chartered credit unions, individual contributors, and special events. These resources enabled ICUL to maintain a visible and credible presence with policymakers statewide.

↑ \$543,160

Project Zip Code (PZC)

Project Zip Code continued to demonstrate the collective impact of Illinois credit unions. Forty-six credit unions ran or updated PZC in 2025, documenting 3,128,803 members, representing 71.4% of total affiliate memberships. Reinforcing the strength and reach of the movement in every legislative district.

👥 3,128,803

America's Credit Unions PAC - Illinois

Illinois credit unions continued to support federal advocacy through the America's Credit Unions PAC. In 2025, the PAC raised \$54,720 from individuals across 54 credit unions, helping ensure champions of credit unions remain strong in Washington, D.C.

💰 \$54,720

National Advocacy Fund (NAF)

Illinois once again exceeded expectations in support of the National Advocacy Fund, achieving 166% of its goal. This success strengthens national-level advocacy initiatives that protect credit unions from harmful legislation and advance key policy priorities across the country.

📈 166%



Abby Walsh
Director, Political Action

State Advocacy Fund (SAF)

ICUL established the State Advocacy Fund (SAF) to create a sustainable, long-term source of support for state-level advocacy, outreach, and education. The SAF strengthens the League's ability to advance a favorable legislative and regulatory environment for Illinois credit unions and the communities they serve.

REGIONAL DIRECTORS

The Regional Director Team expanded in person and virtual engagements, returning to full capacity with the addition of Brian O’Kelly in April. The team engaged with credit unions on stablecoins, AI, and leadership transitions, while also supporting them through consolidation and merger strategies.

1,064

Credit Union
Contacts



462

In-Person &
Virtual Credit
Union Visits



92

Chapter
Meetings



151

Training &
Planning
Sessions
Completed



53,910

Business Miles
Driven



Kevin Shaw
VP, Regional Management



Rick Goluszka
Senior Regional Director



Nick Mager
Senior Regional Director



Brian O’Kelly
Regional Director

REGULATORY & COMPLIANCE



Regulatory Engagement

ICUL met quarterly with IDFPR leadership in 2025, addressing examiner staffing, ELT implementation, ILCRA examinations, merger concerns, and impacts of NCUA staffing reductions. ICUL also hosted IDFPR's Regulatory Innovation Officer at a virtual town hall to discuss the Genius Act, stablecoins, digital assets, and partnership models. **IDFPR confirmed a \$1.3M regulatory fee credit** for state-chartered credit unions (applied to March 2026 assessments) and a **freeze on proposed 2026 CRA fees** pending final confirmation.



NCUA Engagement

Following federal administration changes, Kyle Hauptman was appointed NCUA Chair (Jan. 22), with Sarah Bang as Chief of Staff; Julie Cayse was appointed Region West Director (Jan. 13) and engaged directly with Illinois credit unions at ICUL's town hall and Convention. ICUL also facilitated dialogue on anticipated 2026 supervisory priorities amid agency staffing shifts.



Illinois Community Reinvestment Act (ILCRA) – 2025 Focus

With ILCRA requirements moving into active examinations, ICUL delivered four ILCRA performance test webinars tailored by asset size; five state-chartered credit unions were scheduled for exams by year end, and ICUL provided direct support throughout. ICUL secured the release of IDFPR's ILCRA Examination Request document and convened an ILCRA Exam Advisory Committee to submit recommended revisions in early 2026.

Compliance Services & Support



1,569 inquiries answered,
67 publications delivered
(bulletins, alerts, updates, blogs)



47 BSA Independent Testing engagements; **12** SAFE Act audits; **11** CU Assist back office engagements *(primarily SAS)*



5 regulatory comment letters submitted



26 meetings with state-chartered credit unions on ILCRA assessment fields



Shannon Basile
Senior Director, Compliance

ILLINOIS CREDIT UNION FOUNDATION (ICUF)

ICUF had an outstanding year, raising \$391,175 and disbursing \$295,425 in grants, scholarships, disaster assistance, and financial health programs. In addition, the Foundation awarded \$511,151 in Association Healthcare Program grants supporting small asset credit unions.

Financial Education

48 Reality Fairs reaching 3,600+ students; expanded Spanish materials for Bite of Reality; hosted an Exploring Why workshop in Springfield

 **3,600+**

Association Healthcare Plan

Continued assistance for 30 small credit unions; Envisant funding supported pilot participants

 **30**

Social Media Pilot *(with Filene & 25 CUs)*

Expanded the 2024 initiative using Jean Chatzky content; positive engagement for CUs < \$100M assets

Small Business & Community Development

\$25,000 from FHLB Chicago to expand technical assistance via IHCC/SBDC

 **\$25,000**

Disaster Relief & Global Support

\$10,000 to the Worldwide Foundation for Credit Unions for international disaster aid; \$5,000 to NCUF's CUAid Fund

 **\$10,000**

Professional Development

Sponsored Enhanced FiCEP; 75 participants from 19 credit unions earned CCUFC

 **75**

ICUF DISTRIBUTIONS
ICUF DISTRIBUTIONS
ICUF DISTRIBUTIONS
ICUF DISTRIBUTIONS
ICUF DISTRIBUTIONS

 **\$71,013**
Scholarships

 **\$15,000**
Emergency Aid

 **\$165,900**
Grants

 **\$511,151**
AHP Grants

 **\$43,512**
Financial Health Projects

 **\$806,576**
Total Distributions



TRAINING, EVENTS & MEMBER ENGAGEMENT



Annual Convention – “One Mission, One Voice”

Illinois credit unions convened at the historic Hilton Chicago for the 95th Annual Convention, reinforcing unity during a year marked by legislative challenges and taxation threats. Attendance increased 7%; exhibitor participation rose 18%.

Leadership Development

The sold-out Women’s Leadership Conference launched a Sister Society three-part leadership series to extend learning beyond the event. Young Professionals Conference, also sold-out, delivered a 1.5 day experience and a service project that raised \$1,000 and contributed 178 handmade items to CMN Hospitals.

Executive Support & Peer Networking

ICUL introduced a new Executive Summit for new/next level CEOs and hosted two Peer Networking Symposiums with 200+ participants across 12 groups. Features included a Vendor Showcase and a cybersecurity lunch and learn.

Online & On Demand Education

On-demand training and webinar attendance continued to grow. League event engagement reached 2,171.

#ILoveMyCreditUnion Social Media Blitz

The fifth annual campaign generated ~25,000 posts and reached ~7 million people across platforms, with engagement in 21 countries. Envisant donated \$15,000 to Illinois Children’s Miracle Network Hospitals.

CU Kind Day® (October 13, 2025)

74 credit unions & partners; 1,800+ volunteers; ~3,400 hours; \$81,000+ in goods/donations supporting 140 organizations. Participation expanded to eight states with ICUL leadership.



Sandy Kallal
Senior Director, Member Resources



Sondra Becker
Sr. Meeting & Event Planner



Jasmine Taylor-Newton
Community & Program Coordinator



Lexy Leezer
Training and Event Coordinator



Kaitie Mayberry Hauser
Events & Partnerships Coordinator

The ICUL Annual Convention Celebration Award Lunch honored ICUL Award Winners



Mark Lenaway
Small Credit Union Award



Kim Alongi
Employee of the Year Award



Eva Maria Watts
Volunteer of the Year Award



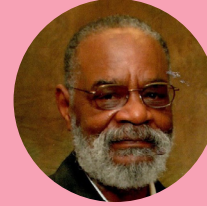
Lloyd Fredendall
Leadership Award



Karen Jurasek
Leadership Award



John M. Swick
Lifetime Achievement Award



Ted Wordlaw
Lifetime Achievement Award

CU REACH

- ILLINOIS YOUNG PROFESSIONALS GROUP -

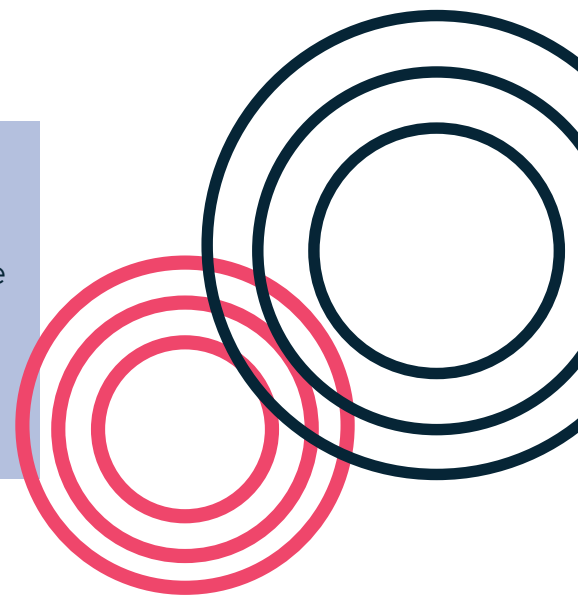
The future of the credit union movement depends on cultivating emerging leaders. In 2025, CU Reach continued to deepen its impact by expanding professional development opportunities, strengthening statewide engagement, and empowering young professionals with the connections, resources, and support they need to grow, lead, and thrive within the credit union system.

NEW in 2025

 **4 YP Chapter Events**

12 Young Professional Committee Members and YP Ambassadors

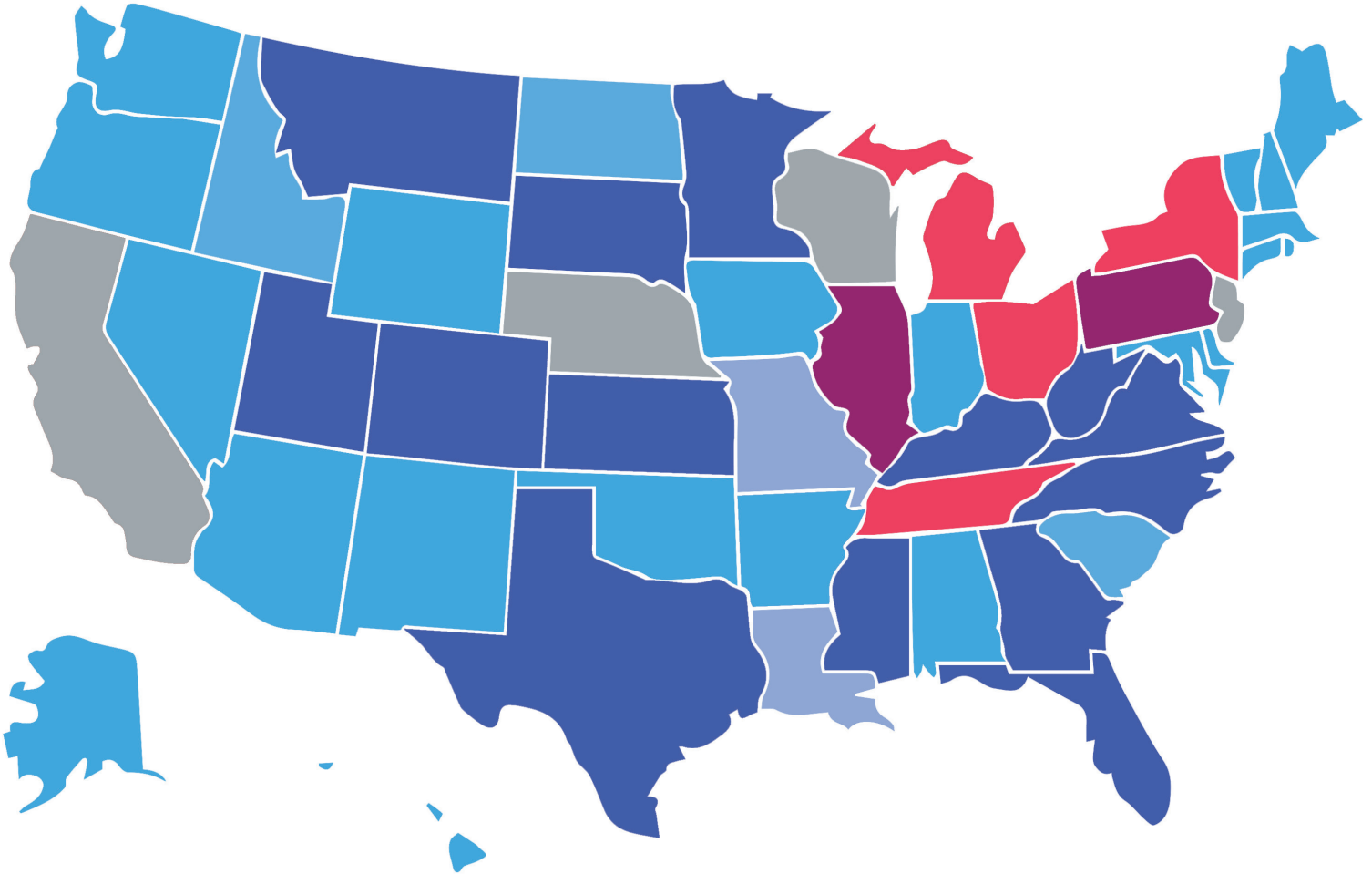
26 YP Crashers attended GAC, the State Legislative Summit, or Annual Convention



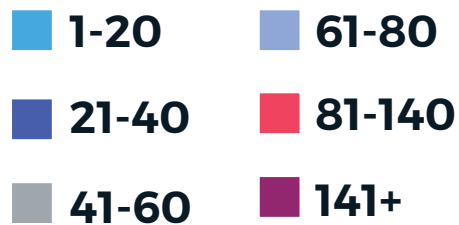


Envisant

Envisant is dedicated to empowering credit unions with innovative payment and financial solutions. As the business subsidiary of the Illinois Credit Union League, Envisant offers comprehensive services, including credit and debit card programs, portfolio growth strategies, and cutting-edge partnerships to help credit unions thrive.



ENVISANT CREDIT UNION CUSTOMERS BY STATE



HIGH PERFORMANCE. HIGH MODERNIZATION. HIGH TRUST.

Scaling Delivery & Modernization

We accelerated national payments capabilities—expanding project delivery, modernizing card programs, and advancing BIN and contactless upgrades that elevated the member experience.

Portfolio Growth & Retention

Our debit franchise grew meaningfully while retention improved across both debit and credit, reflecting strong partner confidence and long-term commitments.

Fraud & Risk Leadership

We maintained high approval rates with fraud levels well below industry norms—protecting members while preserving a seamless, low-friction transaction experience.

Prepaid Momentum & Platform Readiness

Prepaid engagement deepened through stronger digital reload behaviors and higher-value use cases. We advanced next-generation infrastructure and simplified our platform to support future growth.



Jamie Conrad
SVP, Debit and Credit Cards



Phillip Seely
VP, Customer Service & Partner Management



Naomi Anderson
VP, Prepaid



MaryAnne Colucci
Senior Director, Fraud & Risk



PARTNERSHIPS & STRATEGY

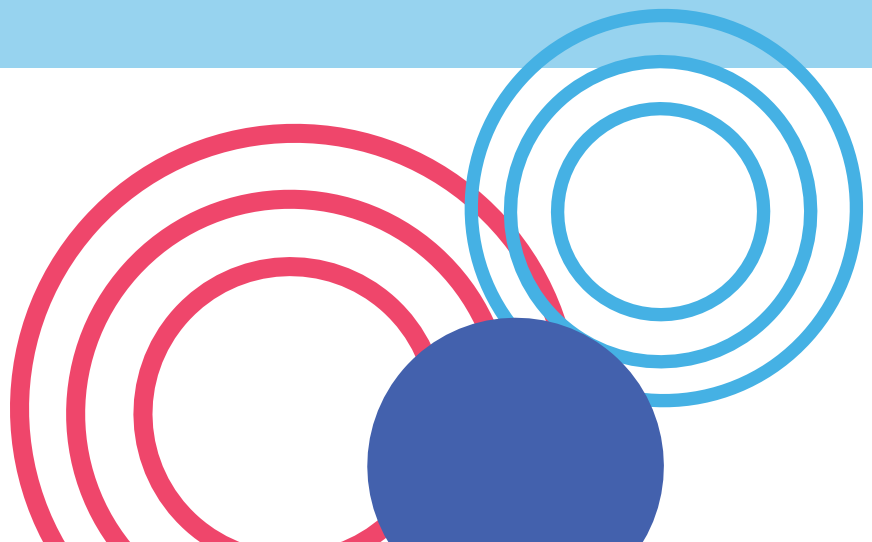
We expanded our strategic ecosystem with new partnerships and deeper collaborative structures. A formal Innovation Committee brought credit unions together across asset tiers to explore emerging solutions. We strengthened compliance and reporting support through a new partnership with The Redmond Company, and added Member First Mortgage to broaden lending options for credit unions. Our long-standing alignment with TruStage continued to deliver strong engagement and shared value across the system.

Our strategic initiatives and partnerships drove increased engagement and financial returns.

- ASI/ESI
- AviaryAI
- BankSocial
- Clover
- Cooperative Business Services
- CU Marketing Center
- CUNA Strategic Services
- Credit Union Loan Source
- Federal Home Loan Bank of Chicago
- Filene
- FIS
- Fiserv
- GreenPath Financial Wellness
- Harness
- HR Source
- Inclusiv
- Janusea
- Juntos Avanzamos
- K2S
- McQueen Financial Advisors
- Meirtran
- Member First Mortgage
- Nickels
- Origence
- Pure IT Credit Union Services
- Redmond Company
- Stumm Insurance
- Sparrow
- TruStage
- Visa
- Visa DPS
- WithClutch



Doug Williams
VP, Product Development
& Strategy



WE SUPPORT & BELONG

We reaffirmed our commitment to support organizations that uplift credit unions and their communities. We contributed to a diverse range of partners, from advocacy groups to local food pantries, reinforcing our dedication to collaboration and industry growth. By investing in initiatives that drive innovation and inclusion, ICUS continues to build a stronger future for credit unions and the communities they serve.



LIST OF ORGANIZATIONS

- A Safe Place Women's Shelter
- African-American Credit Union Coalition
- America's Credit Union Museum
- Children's Miracle Network/Credit Unions for Kids
- Credit Union House
- Credit Union Women's Leadership Alliance
- CU Pride
- Guardian Angel Community Services
- Illinois Credit Union Foundation
- Illinois Hispanic Chamber of Commerce
- 14 Food Pantries
- National Advocacy Fund
- National Association of Latino Credit Unions & Professionals
- National Credit Union Foundation
- World Council of Credit Unions



*1807 W. Diehl Rd
Naperville, IL 60563*
630.983.3400

*225 S. College, Suite 200
Springfield, IL 62704*
217.744.1800

HELLO@ICUL.COM

ICUL.COM

ENVISANT.COM

